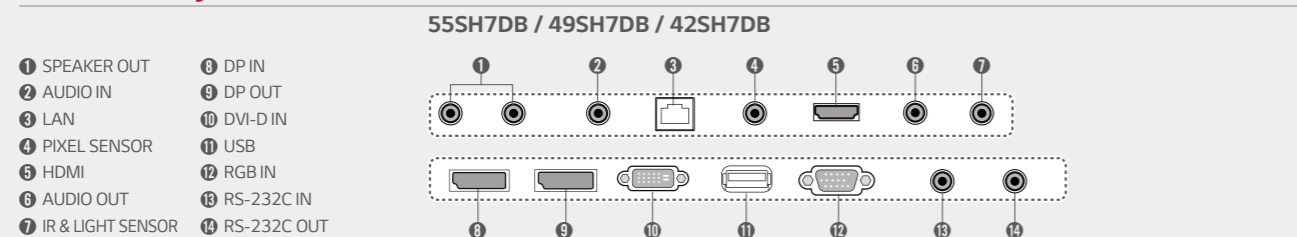


## Specifications

SH7DB Series		55SH7DB	49SH7DB	42SH7DB
PANEL	Screen Size	55	49	42
	Panel Technology		IPS (PD)	
	Aspect Ratio		16 : 9	
	Native Resolution		1,920 x 1,080 (FHD)	
	Brightness		700cd/m <sup>2</sup>	
	Contrast Ratio		1,300:1	
	Dynamic CR		500,000:1	
	Viewing Angle (H x V)		178 x 178	
	Surface Treatment	Hard coating (3H), Anti-glare treatment of the front polarizer (Haze 10 % (Typ.))		
	Guaranteed Operating Hour	24 Hours		
CONNECTIVITY	Orientation	Portrait & Landscape		
	Input	HDMI, DP, DVI-D, RGB, Audio, USB		
	Output	DP, Audio, External Speaker		
	External Control	RS232C (In/Out), RJ45, IR Receiver, Pixel Sensor (Optional)		
PHYSICAL SPECIFICATION	Bezel Color	Black		
	Bezel Width	7.4mm (T/R/L/U even)	7.4mm (T/R/L/U even)	7.4mm (T/R/L/U even)
	Monitor Dimension (W x H x D)	1,230 x 701 x 29mm	1,095 x 625 x 29mm	949 x 543 x 29mm
	Weight (Head)	20.7kg	15.6kg	12.5kg
	Weight (Head + Stand)	22.1kg	17kg	13.9kg
	Monitor with Optional Stand & Speaker Dimensions (W x H x D)	1,230 x 776 x 298mm	1,095 x 700 x 298mm	949 x 618 x 298mm
	Weight (Head + Stand + Speaker)	22.9kg	17.8kg	14.7kg
	Carton Dimensions (W x H x D)	1,330 x 815 x 174mm	1,197 x 760 x 134mm	1,045 x 645 x 127mm
	Packed Weight	25.2kg	18.7kg	14.8kg
	VESA™ Standard Mount Interface	400 x 400mm		
SPECIAL FEATURES	USB Content Scheduling, Conformal Coating, SNMP Support, Wi-Fi Ready (Dongle), Power Management modes (Sustain Aspect Ratio/Stand-by Screen, etc.), No Signal Image setting, Enhanced ISM (Image Sticking Minimization) Mode, Holiday Schedule/Local Time Auto Setting, Fail-over (USB, RGB, DVI, HDMI), Wake on LAN, DVI/HDMI to DP out			
	ENVIRONMENTAL CONDITIONS	Operating Temperature Range 0 °C to 40 °C	0 °C to 40 °C	0 °C to 40 °C
POWER	Operating Humidity Range	10 % to 80 %	10 % to 80 %	10 % to 80 %
	Power Supply	100-240V~, 50/60Hz		
POWER CONSUMPTION	Power Type	Built-In Power		
	Typ.	140W	125W	110W
STANDARD (CERTIFICATION)	Smart Energy Saving	95W	80W	60W
	Safety	UL / cUL / CB / TUV / KC		
	EMC	FCC Class "A" / CE / KCC		
MEDIA PLAYER COMPATIBILITY	ErP / Energy Star	Yes / Yes (Energy Star 6.0)		
	OPS Type Compatible	Yes	Yes	Yes
SOFTWARE COMPATIBILITY	External Media Player Attachable	Yes (MP500/MP700)	Yes (MP500/MP700)	Yes (MP500/MP700)
	SuperSign-W/Lite	Yes		
ACCESSORY	SuperSign-C	Yes		
	Basic	Remote Controller (2 batteries included), Power Cord, QSG, RGB Cable, Regulation Book, Phone to RS232C Gender, IR Receiver		
Optional	SP-2100 (External Speaker), ST-200T, LSW440S, AN-WF500 (Wi-Fi USB Dongle), KT-OPSA (OPS Kits), KT-SP0 (Pixel Sensor)	SP-2100 (External Speaker), ST-200T, LSW440S, AN-WF500 (Wi-Fi USB Dongle), KT-OPSA (OPS Kits), KT-SP0 (Pixel Sensor)	SP-2100 (External Speaker), ST-200T, LSW440S, AN-WF500 (Wi-Fi USB Dongle), KT-OPSA (OPS Kits), KT-SP0 (Pixel Sensor)	SP-2100 (External Speaker), ST-200T, LSW440S, AN-WF500 (Wi-Fi USB Dongle), KT-OPSA (OPS Kits), KT-SP0 (Pixel Sensor)

## Connectivity



Download LG Commercial Display Mobile App



More info [www.lgcommercial.com](http://www.lgcommercial.com)

You Tube [youtube.com/c/LGCommercialDisplay](https://www.youtube.com/c/LGCommercialDisplay)

LG may make changes to specifications and product descriptions without notice.  
Copyright © 2015 LG Electronics Inc. All rights reserved. "LG Life's Good" is a registered of LG Corp.  
The names of products and brands mentioned here may be the trademarks of their respective owners.



## Simplified Installation and Convenient Maintenance

### Standard Performance SH7DB Series



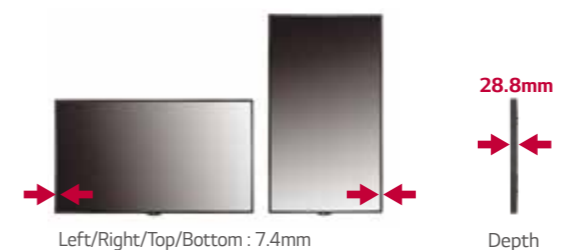
With its narrow even bezel, LG SH7DB enables you to create landscape or portrait walls in multiple installation scenes. It is enhanced in reliability and maintenance by protecting the circuit board from dust, iron filings and humidity, and by detecting screen failures with SuperSign™ Software. Supporting convenient content management, this series are suitable for installation environments such as airport, retail and multiplex etc.

## Key Features

### Simplified Installation

#### Narrow Even Bezel

Slim, sleek and stylish design, SH7DB has advantages for portrait and video wall scene



### Detachable Logo

Portrait mode allows the logo to be positioned in the desired setting.



### Supportive Convenience

#### OPS\* & HDBaseT Compatibility

The SH7DB provides an OPS Kit to connect a third-party OPS player or HDBaseT box. Users have the flexibility to choose any media player as long as it complies with the OPS.



\*OPS : Open Pluggable Specification

### Dust & Humidity Protection

#### Conformal Coating

Circuit board reliability is enhanced with conformal coating that protects against dust, iron powder, humidity and other harsh conditions.



# Simplified Installation and Convenient Maintenance

## Standard Performance SH7DB Series



**Screen Sizes**  
55"/49"/42"

### SH7DB Series

- Brightness : 700cd/m<sup>2</sup>
- Bezel : Top/Left/Right/Bottom 7.4mm
- Depth : 28.8mm
- Special : Wi-Fi Dongle Ready, SuperSign W/C/M
- Local Time Auto Setting
- DP / HDMI / DVI / RGB / RS232C / RJ45 / IR (DP1.2 daisy-chain)

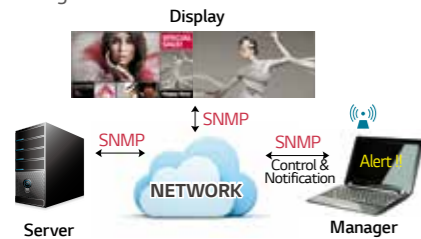


## Key Features

### Convenient Connectivity Support

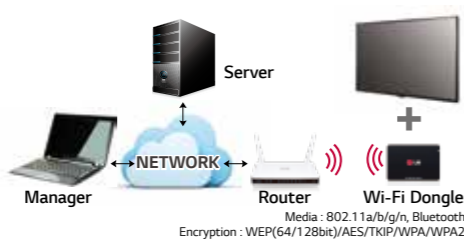
#### Simple Network Management Protocol

SNMP support ensures convenient network management.



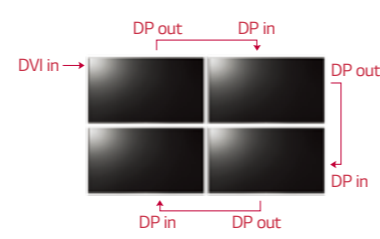
#### Wi-Fi Support

SH7DB Series support Wi-Fi USB dongle connection for convenient content distribution.



#### Digital input to Daisy Chain

Support DVI/HDMI digital signal turns to DP out.



### Screen Management Mode

#### Aspect Ratio Sustainability\*

Sustain the same resolution and picture quality while powering on/off by receiving EDID<sup>1)</sup> through switch IC.



1) Extended Display Identification Data.  
\* Installation Menu > LG Digital Signage > PM Mode

#### Stand-by Screen\*

Even without signal from the media player, the network does not turn off completely, so remote control is possible, which prevents unnecessary power usage and enables efficient management.



#### Scheduled Screen Wash\*\*

Prevent residual images with the screen transition feature.

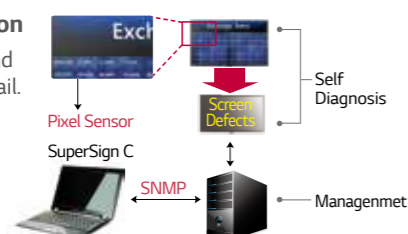


\*\* Installation Menu > ISM Method

### Content Management

#### Screen Fault Detection

Detects screen failure and sends an alert log by email.



#### USB Content Scheduling

Play and schedule contents with a USB connection-no server connection required.



\*Supported Content Type : Video (MPEG1/2/4, H.264), Audio (MP3, AC3, MPEG, AAC, HEAAC, LPCM), Image (JPEG, PNG, BMP)

### Advanced Failover

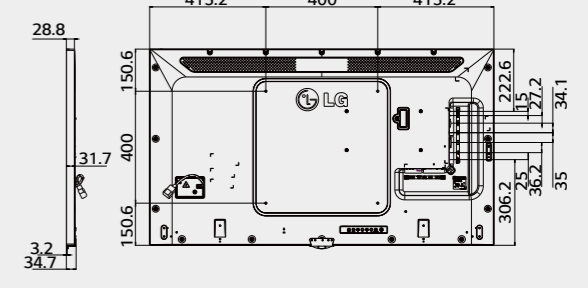
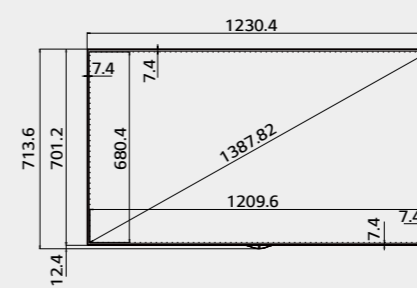
Enables content to be displayed without dead spots when none of the external inputs is working. The monitor performs the signal switching automatically.



### Dimension (unit : mm)

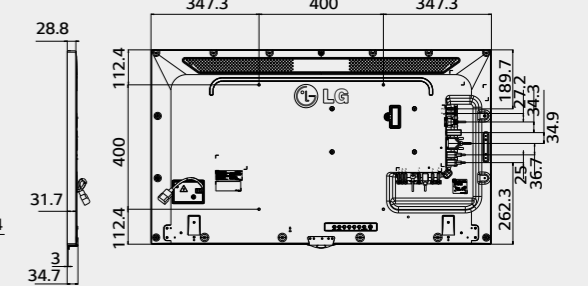
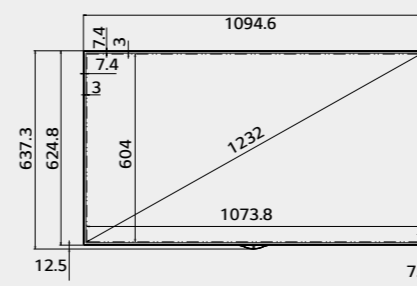
**55"**

1,230 x 701 x 29 / 20.7kg



**49"**

1,095 x 625 x 29 / 15.6kg



**42"**

949 x 543 x 29 / 12.5kg

